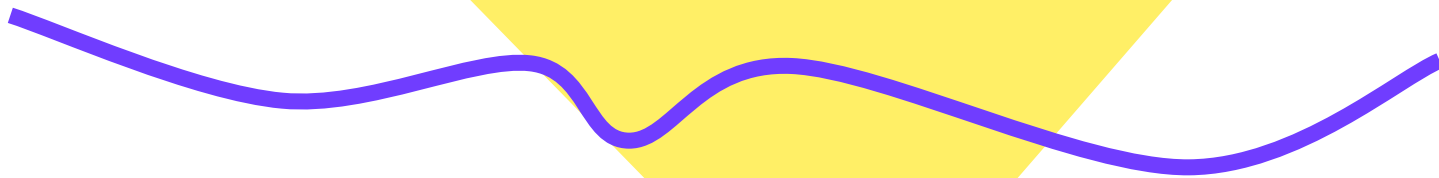




Welcome to St Michael's Church of England Primary School

Two Year old and Nursery
information

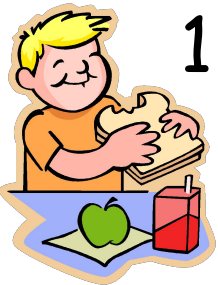


Starting School

When starting school two year olds or Nursery children will start on the same day as the rest of the school.

Two year old children will attend for a morning session (a maximum of five sessions per week) and these sessions will begin at 8.30am and finish at 11.30am.

Nursery children will either come to school in the morning from 8.45am - 11.45am which includes lunch (£1 per meal) or the afternoon from 12.15pm - 3.15pm which includes a snack.



Free entitlement for two to four year olds

Some two year old children are entitled to 15 hours fully funded education.

All Nursery aged children are entitled to 15 hours fully funded education. Some children do stay all day in Nursery and either **pay** for an extra 15 hours or are able to access the **additional** 15 hours which entitles them to 30 hours. Please check if you are eligible for either free entitlement (see below)

<https://www.northumberland.gov.uk/Children/Family/Childcare/Early-years-education-%E2%80%93-free-entitlement.aspx>



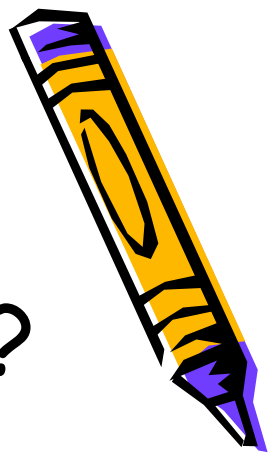
Foundation Stage

What is the Foundation Stage?

The Foundation Stage is the stage of education for children from birth to the end of the Reception year.

The Foundation Stage Curriculum is based on the recognition that children learn best through play and active learning.

It details standards for learning, development and care children in the early years .



The curriculum is organised into the areas of learning listed below:

PRIME AREAS

1. Personal Social and Emotional Development
2. Physical Development
3. Communication and Language

SPECIFIC AREAS

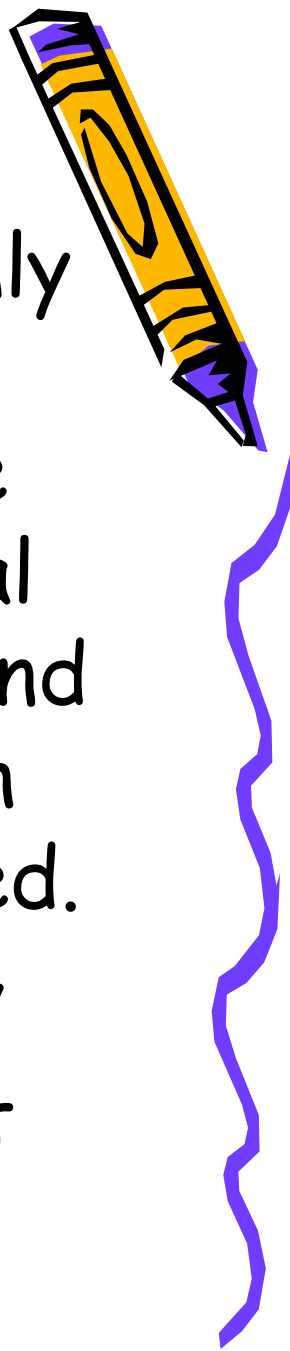
4. Literacy
5. Maths
6. Understanding the World
7. Expressive Arts and Design



Two year old curriculum

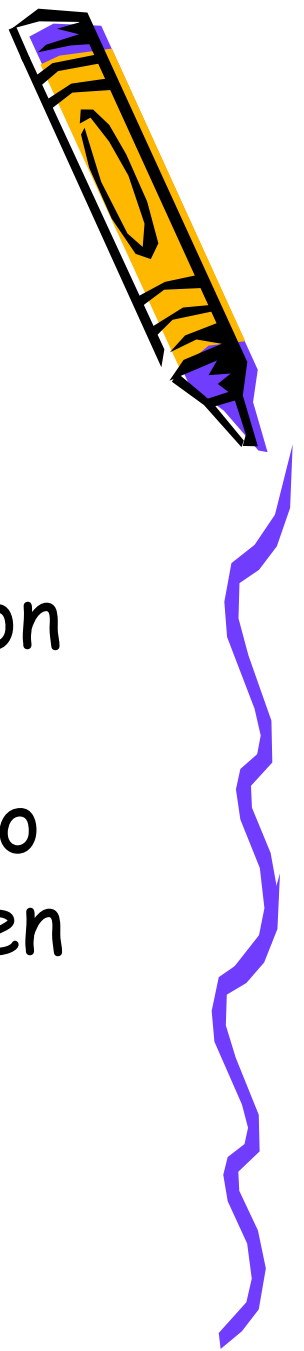
Two year old provision will focus mainly upon the areas of the Early Years curriculum which are called the Prime Areas - Personal, Social and Emotional Development, Physical Development and Communication and Language although the other areas will also be considered.

Children will learn through play and exploration and through adult led experiences.



Nursery curriculum

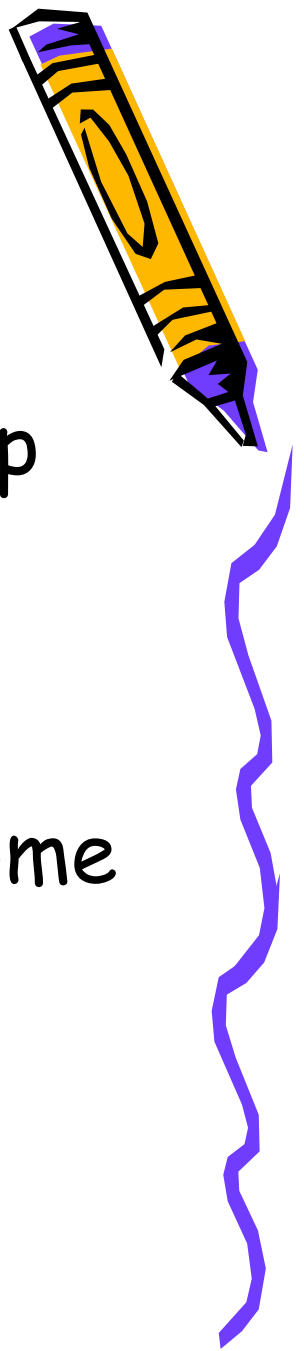
Our Nursery curriculum will develop children's skills and knowledge throughout all areas of learning but again there will be a lot of emphasis on the prime areas which are very important in their ability to move onto the specific areas of learning. Children will learn through child initiated play and through some adult led learning.



Reception curriculum

Our Reception curriculum will develop children's skills and knowledge throughout all areas of learning.

Children will have elements of child initiated play in their learning and some elements of more formal learning including Literacy and Maths.



Personal, Social and Emotional Development



The children will learn to:

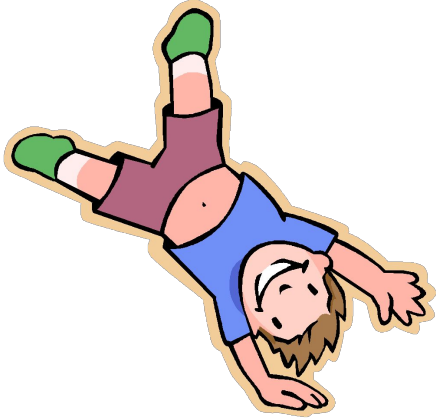
- Play co-operatively, taking turns;
- Listen to others;
- Form positive relationships;
- Try new activities
- Speak to others
- Ask for help.
- Talk about feelings



Physical Development

The children will learn to:

- Show good coordination.
- Move confidently.
- Negotiate space.
- Handle equipment and tools.
- Understand importance of diet and exercise for good health
- Talk about ways to keep healthy and safe
- Dress independently
- Wash independently
- Go to the toilet independently



Communication, Language and Literacy

The children will learn to:

- Listen attentively
- Make relevant responses
- Follow instructions
- Ask 'how' and 'why' questions
- Can express ideas to an audience
- Describe events in past, present, future



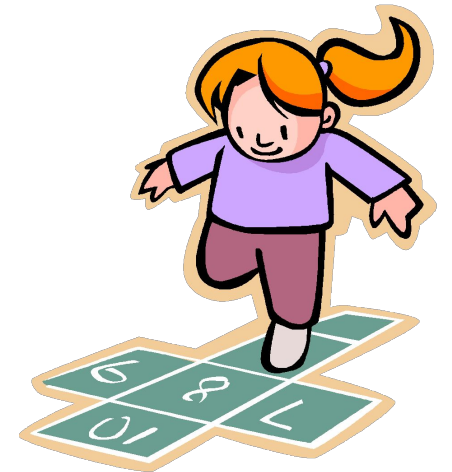
Maths

In Number the children will:

- Count reliably with numbers 1 - 20
- Place numbers 1 - 20 in order
- Recognise or select numbers
- Add and subtract
- Solve problems

In Shape, Space & Measure the children will:

- Use measurements
- Recognise, create, describe patterns
- Describe objects and shapes



Understanding of the World



The children will:

- Talk about past and present events.
- Show sensitivity to likes/dislikes of others.
- Know similarities/differences between themselves and others.
- Learn in familiar places.
- Observe and describe environments.
- Recognise the uses of technology.
- Use technology for a purpose.

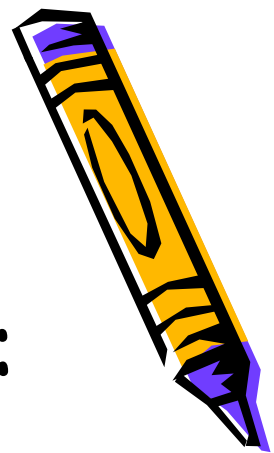


Expressive Arts & Design



The children will explore:

- Singing songs.
- Making movement.
- Dance.
- Using tools and materials safely.
- Using media and materials imaginatively.
- Representing their ideas in a variety ways.



The first few weeks



We will find out what the children
already know and can do
and use this information to plan the next steps in
learning for your child.

We may already have some assessment information
from their previous setting passed onto school.

*We value any contributions you would
like to make in helping us get to know
your child and their needs.*

**You will be invited to tell us about your child
through scheduled phone conversations
before they start and then a short while after they
start you will be asked to chat
with us about how they have settled in.**



Assessment and monitoring progress

We collect observational evidence through a Northumberland County Council observational tool on a secure school site called School 360. Lots of Early Years settings are using Early Years online learning journals to collect observations of children which include anecdotal or photographic evidence to support judgements on where children are in their learning and to help identify the next steps.

As a school we take confidentiality and safeguarding extremely seriously. Each child will be allocated their own individual log in and then parents will be sent an additional log in. You and your child can then access and see their observations, add your own information from home and access learning materials on the site. Please keep this log in safely and if you misplace them or are concerned at all please contact school immediately.

Before we begin to use this observational tool we ask for parental permission. Please see the permission letter to sign and return to school.

Thank you



Assessment at the end of Reception

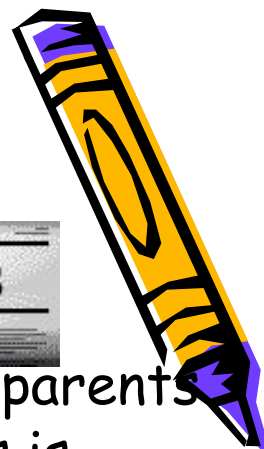
At the end of Reception children are expected to have achieved a **good level of development** which means they have achieved at least **expected** in the following Areas of Learning - Personal Social and Emotional Development, Physical Development, Communication and Language, Literacy and Maths.

This assessment is not a test. It is based upon observations and knowledge of the children throughout their time in Early Years and their progress towards this will have been discussed with you through parent consultations and other opportunities for discussion.





Communication Between Home & School



We like to pride ourselves on our good communication with parents and carers and use a variety of methods to achieve it - this is usually by email: admin@stmichaelsprimary.northumberland.sch.uk.

School uses a newsletter which is emailed to parents to send out important information, dates and celebrate exciting news. Please remember to give us your email so you can receive this.

In Early Years your child will have a named key worker whose role is to support your child in school and complete assessments but they are also there to talk and support parents and carers. They will also be present at your child's parent consultations to discuss their progress.

We use a **Home School Me** book in Early Years to communicate between home and school.

Children enjoy sharing the exciting things they do at home with us and we share their learning and exciting events that happen in school with you.



Please feel free to contact us if you have any questions. Unfortunately, at this time we cannot currently show you around nor organise home visits but have a look on our website and it will give you a flavour of our school. If your child is starting their learning with us we will try and make their start as smooth as possible in the circumstances we find ourselves in.

Last but not least



Welcome to our School !

